



ESS Emergency Safety Shower Water Heater

Tepid Water for Emergency Safety Shower/Eyewash Stations

Features

- Heavy duty Construction with Hydrastone cement lining provides tank longevity
- Copper-silicon alloy tappings cannot rust nor corrode
- High impact composite jacket cannot rust nor corrode and eliminates potential damage during installation and transit
- 3" thick polyurethane foam insulation reduces standby heat loss by over 24% compared to industry standard 2" insulated tanks

Perfectly Packaged System

- Factory packaged with the Therm-O-Mix[®] Station/WWM simplifies installation and ensures a safe reliable supply of tepid water
- All electrical operating controls are factory selected and wired to ensure reliable operation
- Dial gauge provides visual indication of water temperature and pressure



Safety

- Mixing valve designed specifically for emergency drench systems ensures a constant flow of tepid water
- Mixing valve prohibits delivery of overheated water to prevent scalding
- Provides tepid water even when an accident causes a loss of electric power
- Reduces the risk of Legionella because water is stored at an elevated temperature

Reliable

- Full five (5) year non pro-rated tank warranty
- Each valve is performance tested at the factory to ensure proper operation

ESS Part Number Designation

Valve Criteria						
Family Designation	Storage Capacity	Tepid Water Temperature	Standard Ratings KW	Tank Type	Voltage/Phase/HZ	
	0 = 119 Gal.	0 = 85°F 1 = 75°F	0 = 1.5 1 = 3 2 = 4 3 = 4.5 4 = 6 5 = 10 6 = 7 7 = 12 8 = 6.3	0 = SL (Hydrastone Cement Lined) 3 = SL-OWP (Hydrastone Cement Lined w/ Outdoor Weather Package)	0 = 240-1-60 1 = 480-3-60 2 = 208-1-60 3 = 277-1-60 4 = 120-1-60 5 = 480-1-60 6 = 208-3-60 7 = 600-3-60	
389	0	0	3	0	0	0 000

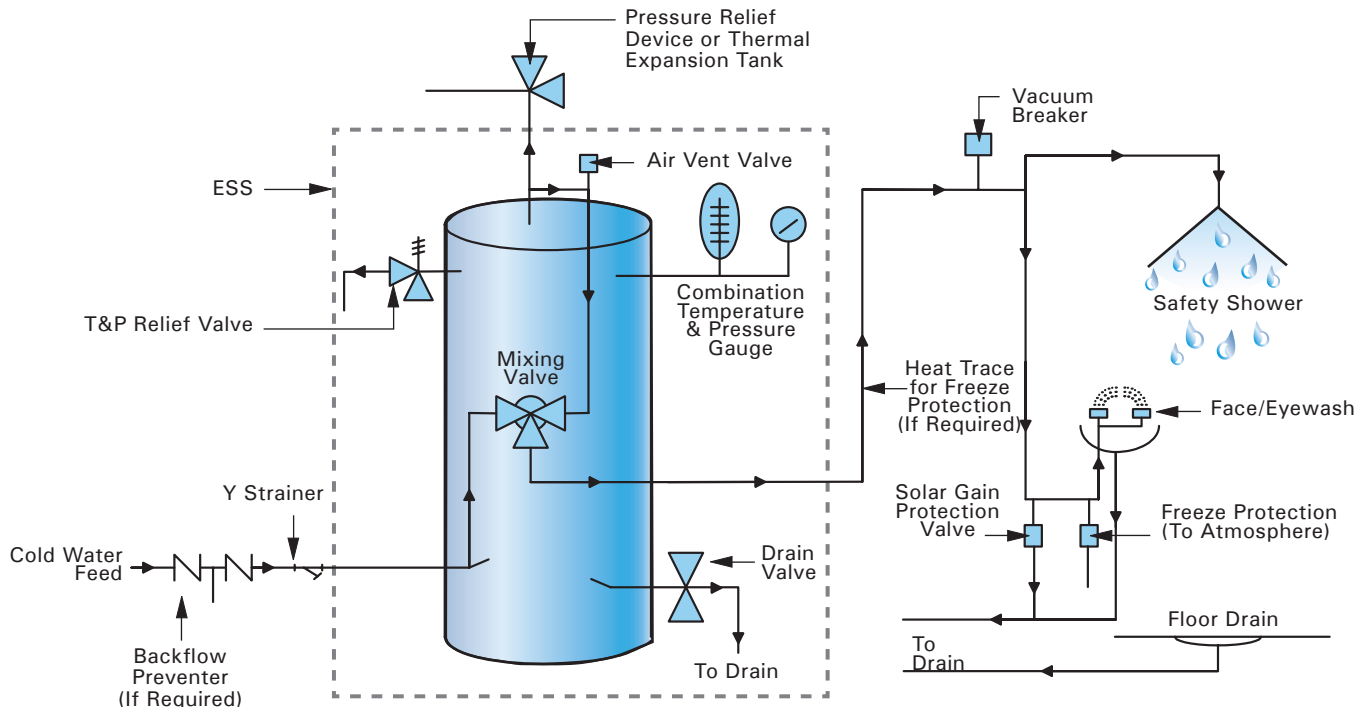
Note: For additional features such as alarm controllers, explosion-resistant construction, NEMA 4X enclosure, outdoor weather package, heat tracing, or integrally welded points, please contact ThermOmegaTech®.

Example: 389-003000-000 The ESS Water Heater emergency tepid water delivery system with a storage capacity of 119 Gallons, 85°F set point of the mixing valve and a 4.5 KW rating. Storage tank is lined with Hydrastone cement and operates at 240 Volts single-phase power.

ESS Water Heater Specifications

Tank:	Hydrastone Cement Lined Steel	Tepid Water Outlet Size:	1 1/4" Female NPT	Mixing Valve Cv:	10.0	Elements:	Copper Sheathed
Storage Capacity:	119 Gallons (see note)	Drain Size:	3/4" GHT	Pressure Drop at 20 GPM:	4 PSI	Insulation:	3" Polyurethane Foam
Orientation:	Vertical	Relief Valve Size:	3/4" Female NPT	Minimum Supply Pressure:	40 PSIG	Tank Warranty Standard:	5 Year Non Pro-Rated
Voltagages:	120 thru 600 Volt	Relief Valve Type:	T&P, 210°F, 150 PSI	Hi-Limit:	190°F	Electrical Warranty:	1 Year
Phase:	1 or 3	Thermostat Range:	100-180°F	Design WP:	150 PSI	Jacket:	High Impact Colorized Composite
Cold Water Inlet Size:	1 1/2" Female NPT	Piping:	Copper Tubing	Design TP:	300 PSI	Color:	Brown and Tan

Note: Alternate storage capacities are available for smaller or larger requirements. Please consult factory for sizing requirements.



NOTE: For systems requiring recirculation see ThermOmegaTech® IMI for typical piping schematic.